



# POST TOK

Internal NEWSLETTER for POST PNG Employees

Edition 08 September/October 2009

Post PNG LIMITED  
PO Box 2 Boroko NCD  
Papua New Guinea  
Ph: 3003718  
Fax: 3233045  
www.postpng.com.pg

## EMPLOYEE AWARD for SEPTEMBER/OCTOBER 2009



Name: Doris Gawi  
Position: Travel Supervisor  
Location: Travel Express  
Date Started: 8/05/07  
Years of Service: 2 years & 5 months  
View of Life: "Have faith in yourself, if you don't who else will".

Doris has been a tower of strength since the departure of our Travel Supervisor, Lakoi Haoda. Doris has been performing tasks that were being handled by Lakoi very proficiently and as a result, she has been promoted to the position of Supervisor. Doris has been instrumental in understanding the new electronic VMPD system and has been selected to attend a IATA workshop in Sydney in November. **Congratulation Doris and keep up the excellent effort. From the Management**

### NEW Payroll Manager



**Ms Rhoda Soerge** left, has recently joined Post PNG. She is the new Payroll Manager. Rhonda commenced in her new role on 30<sup>th</sup> September, 2009. **Welcome on board Rhonda!**

**Ms. Rhonda Soerge** can be contacted on:  
CUG Mobile phone no: **72041100**

### Travel Express Blurb - Top Rate Service

**From:** Terry Mayu [mailto:tmayu@tsl.org.pg]  
**Sent:** Monday, September 28, 2009 2:02 PM  
**To:** dasiba@postpng.com.pg  
**Cc:** Doris Gawi; 'Michael Koisen'  
**Subject:** TOP RATE SERVICE

Good morning Dennis,

I want to commend your staff DORIS GAWI at Travel Express for an exemplary service provided to me (Tisa) on Saturday 28/9/2009.

You see, my boss Mr Koisen is in Bangkok (Thailand) and requested his return date on his e-tkt to be amended. He called me at 11.30 am while I was at Sir John Guise Stadium at Waigani, and Travel Express closes at 12.00 noon on Saturday. I tried calling Travel Express on phone but did not succeed so I rushed to their office and was at the door at 11.50 am. There were 3 ladies in the office when I arrived and they indicated to me by crossing their hands across their chest that the office was closed. I however insisted from outside that I desperately needed to be served. I was almost out of breath when they let me in.

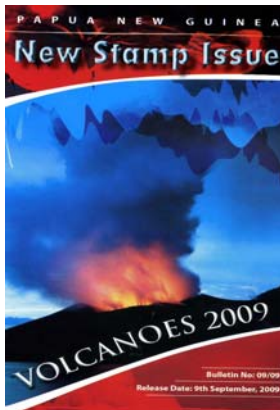
The good girls let me recover my breath then I introduced myself and explained my situation and my purpose for being at their office. The ticketing system (I believe) was closing down but the good girls re-activated it and assisted me by changing the return dates for my CEO. When she finished the entries, Doris Gawi (I believe that's her name) actually showed me the finished work on her screen for confirmation before she emailed to Michael in Bangkok. I left the Travel Express office at 12.05 noon having thanked Doris and the other girls for their best efforts.

I want to say thank you again to Doris for the BEST SERVICE delivered at very short notice and on closing time. I request that you thank your BEST SERVICE DELIVERY GIRLS for us.

Terry Mayu  
General Manager - Corporate Services  
TELEPHONE SERVICES and LOGAN ROAD ETV LIMITED  
Phone: (875) 304 2347  
Fax: (875) 323 3045  
Email: tmayu@tsl.org.pg



### September'09 New Stamp Issue - PNG Volcanoes, 2009



Renowned for its mountainous rages and rugged terrains, Papua New Guinea contains the most active volcanoes in the South Pacific. The volcanoes stretch in an arc from the north coast of New Guinea near the border with Indonesia, to Bougainville Island in the East.

The PNG Volcanoes were formed as a consequences of the Australian and Pacific plates colliding (with several other smaller plates). Active and famous volcanoes in Papua New Guinea include, Manam, Karkar, Lamington, Langila, Ulawun, Tavuvur and Bagana.

About two thirds of the world's visible volcanoes are located on the boundary of the Pacific plate. Eighty are located within Papua New Guinea (PNG). Fourteen of these are active, 22 dormant, the remainder being extinct.

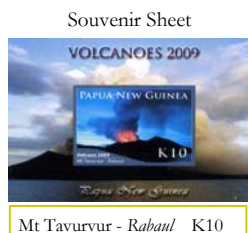
The fourteen active ones have erupted within the last 150 years. Of these, five (Tavuvur, Manam, Karkar, Ulawun and Lamington) are high-risk volcanoes situated near significant numbers of people whose lives and property would be threatened if they were to erupt. From previous experience, the most devastating of them all, according to history was Mt Lamington in Oro Province. The year was 1951. It was about 10:40am on the 21st January when it erupted. An estimated of 3000 - 4000 lives were lost on the fatal day.

Today, curious vulcanologists and like-minded tourists from all over the world continue to frequently visit the areas.

As an indicative of approval of the interest generated over the years, Post PNG Philatelic Bureau has feature volcano as a stamp in 2009.

### VOLCANOES 2009

Available for Sale



Mt Tavorvur - Rabaul K10



Mt Vulcan - Rabaul K0.85  
Mt Tavorvur - Rabaul K3.00  
Mt Bagana - Buka K3.70  
Manam Is - Madang K6.00



Mt Tavorvur - Rabaul K0.85  
Manam Is - Madang K3.00  
Mt Tavorvur - Rabaul K3.70  
Mt Ulawun - Rabaul K6.00

For more information and assistance Contact : PNG Philatelic Bureau P O Box 1, Boroko, NCD, PNG  
Ph: (675) 3003745 Fax: (675) 3003730 Email: philatelic@postpng.com.pg

### THOUGHT OF THE MONTH

" Try not to become a man of success but rather try to become a man of value."

Albert Einstein

### QUIZ OF THE MONTH

Who was the first CFO of Post PNG Limited?

**Answer:** Next Issue

**Answer for quiz in last Post Tok edition:**  
First MD was John Wagambie

## ☐☐ New Faces for Travel Express

Here below are the new staff who have recently joined the Travel Express Department. **WELCOME!**



**Emily Vaname**  
Travel Manager



**Jochebed Buleau**  
Travel Consultant



**Tessa Laurie Neai**  
Travel consultant



**Andrew Kamyra jnr**  
Travel Consultant



**Rebecca Tauraki**  
Cashier

## ☐☐ New Oil Palm 2009 Stamp Issue - October'09 Stamp Issue

### Oil Palm..

Originating from West Africa, Oil Palm grows well in the tropical conditions of PNG, being well suited to the high rainfall and humid conditions. Seeds are produced at the DAMI research centre in Kimbe and used throughout the country and also exported to many parts of the world.

Upon arrival at the plantation the seeds are planted in a nursery and grown for a 12 month period. During this time the seedlings are watered, weeded and fertilized and then planted out in the field, where husbandry continues. By the third year harvesting of the Fresh Fruit Bunches (FFB) starts and the crop is delivered to a palm oil mill. The harvesting blocks are regularly harvested on a 10 to 14 day cycle to ensure good quality oil and high extraction rates. Palms can grow for many years, but in general harvesting becomes difficult after 20 to 22 years and yield declines, so replanted at this age.

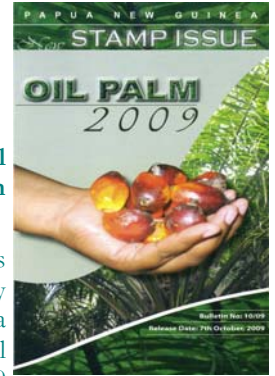
In the mill, the primary product is Crude palm oil and this is mainly exported to Europe for refining. There is one refinery in the country in West New Britain which does produce some cooking oil for local consumption.

The second product is Palm Kernels; these are either exported to Asia for processing or processed in house to produce Palm Oil (PKO) for export. After the production of these two products the Empty Fruit Bunches (EFB) are transported back to the field as fertilizer.

Palm oil is used in variety of edible oils, in particular margarines and fats. Other food uses include dry cake mix, baking biscuits, cakes and sauces. Palm oil is also one of the best oils for frying and extensively used as cooking oil in Asia. Non food uses include soaps, detergents, candles, cosmetics and biodiesel.

Palm oil is now the major agricultural crop within the country and at the present time the major vegetable oil in the World. Within PNG the crop is grown both in Company estates and by Small holders Farmers surrounding the Company.

The Round Table on Sustainable Palm Oil (RSPO) was set a few years ago and is a World wide organization set up to improve the sustainability of palm oil production. At the present time, two companies within PNG have achieved certification to the RSPO process.



### Top Dignitaries attended the New Oil Palm Stamp Issue Launching ceremony



Top Dignitaries of the Oil Palm industry attended the new Oil Palm Stamp Issue Launching ceremony. Post PNG was very happy to have the presence of Felix Bakani Secretary Oil Palm Small Growers Association, Joe Castle GM Oil Palm at Ramu Agri Industries, Brown Bai Chairman Palm Oil Producers Association. During the launching these people commended Post PNG for promoting the Oil Palm through its October'09 stamp issue. *Photo left: From L-R: Felix Bakani Secretary Oil Palm small Growers Association, Joe Castle GM Oil Palm Ramu Agri Industries, Brown Bai Chairman Palm Oil Producers Association and Peter Maiden MD Post PNG.*

### JOKE OF THE MONTH

Once Kanage was walking he had a glove on one hand and not on other. So the man asked him why he did so. He replied that the weather forecaster announced that on one hand it would be cold and on the other hand it would be hot.

## Available for Sale.. New Oil Palm Stamps

### Souvenir Sheet

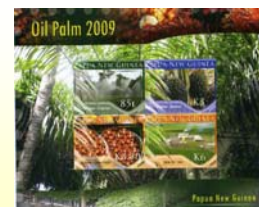


Oil Palm - Fruitlets K10.00



### Stamp Set

Oil Palm - Fruitlets K0.85  
Oil Palm - Nursery K3.00  
Oil Palm - Bunches K3.70  
Oil Palm - Collection K6.00



### Souvenir Sheetlet

Oil Palm - Irrigation K0.85  
Oil Palm - Bunches K3.00  
Oil Palm - Loose Fruits K3.70  
Oil Palm - Mill K6.00